

Introduction to Iridology

Tassadaq Hussain

Associate Prof: Riphah Int'l University

Microsoft Research and Barcelona Supercomputing Center

Barcelona, Spain

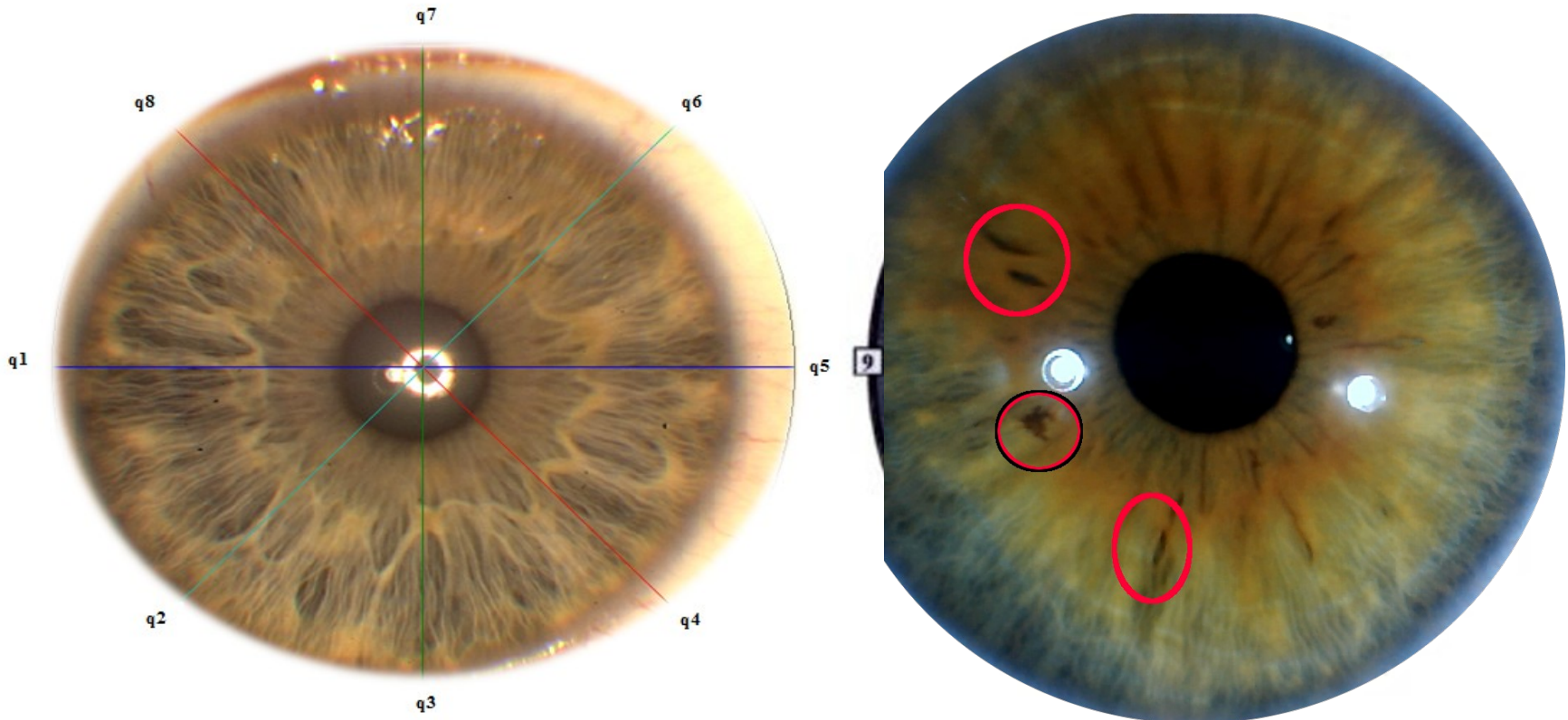
UCERD Pvt Ltd Islamabad

Topics

- Introduction to Idiology
- Disease Pathology
- Past Present and Future
- Iridology A Mystery or Revolution (Review Paper)
- Animal Iridology

Iridology

- The practice examining the iris of the eye for disease diagnoses [1].
- Signs in the iris: **spot**, **pattern** and **change in color**.

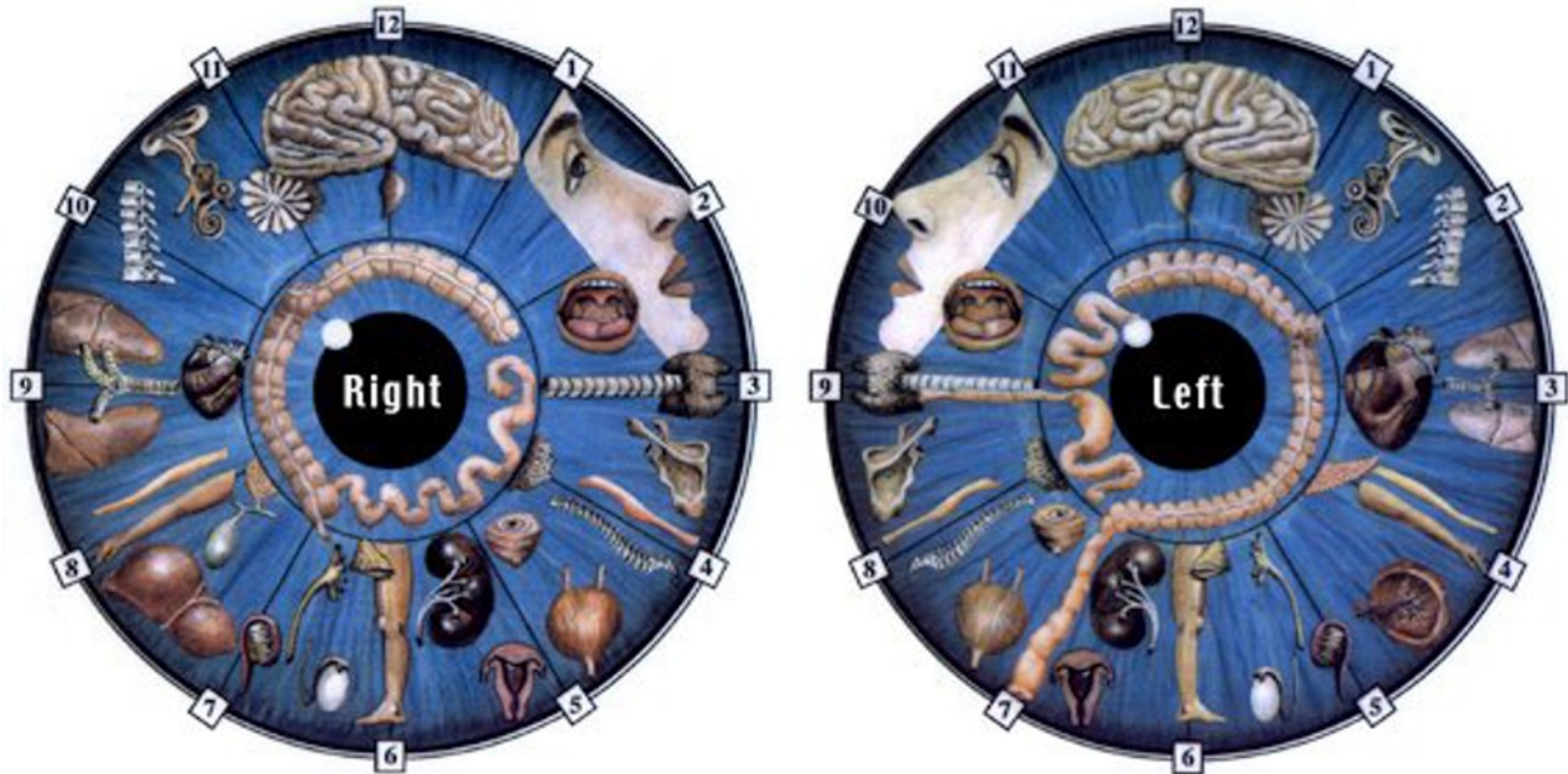


[1] Simon, Allie, David M. Worthen, and John A. Mitas. "An evaluation of iridology." *Jama* 242.13 (1979): 1385-1389.

[2] Iridology Chart developed by Dr. Bernard Jenson, D.C [2]. [ONLINE] Available at <http://www.betterhealththruresearch.com/Iridologist.html>.

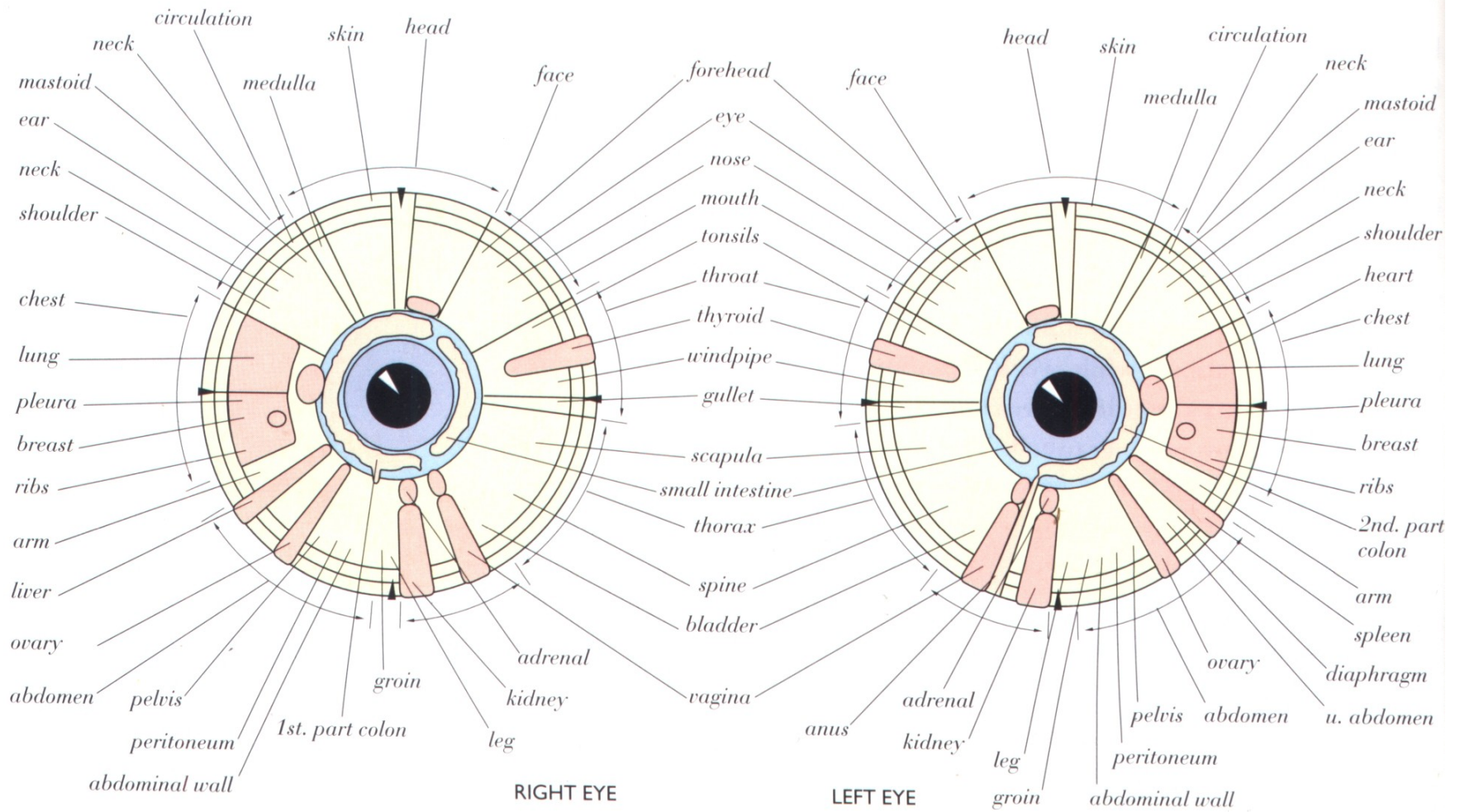
Iridology

- The practice examining the iris of the eye for disease diagnoses [1].
- Signs in the iris: **spot**, **pattern** and **change in color**.



[1] Simon, Allie, David M. Worthen, and John A. Mitas. "An evaluation of iridology." *Jama* 242.13 (1979): 1385-1389.

[2] Iridology Chart developed by Dr. Bernard Jenson, D.C [2]. [ONLINE] Available at <http://www.betterhealththruresearch.com/Iridologist.html>.



Iridology is NOT a Disease Diagnostic Tool

- Iridologists use its methods to help individuals strengthen the health with which they were born.
- We are born with specific strengths and weaknesses from our ancestors, especially the past three generations.
- Do not tells us disease level.

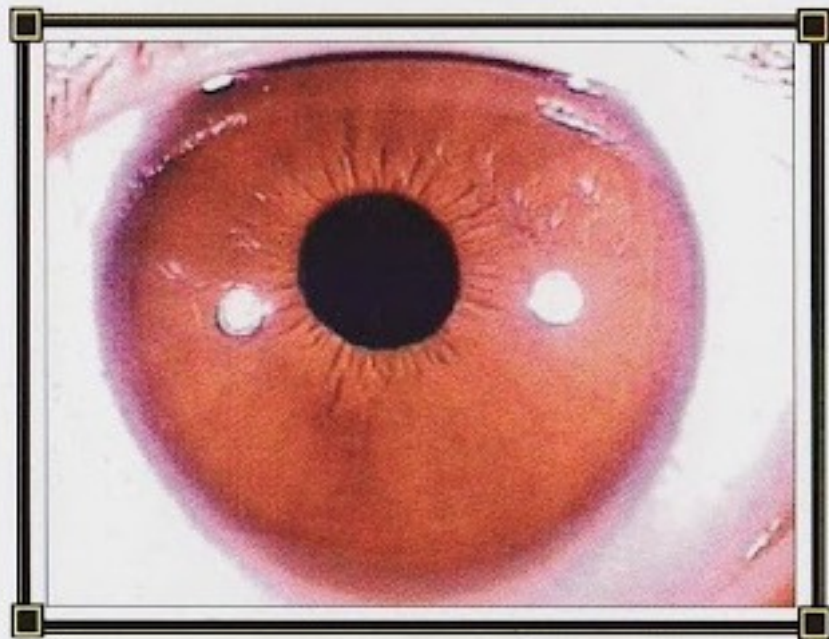
Iridology is Used For

- Diagnose cancer or any other disease although it can give you indications of inherited energy weakness in the various tissues.
- Determine if one has parasites, fungus or bacteria in any organ or system.
- Determine constipation, toxic colon or diverticulitis.
- Determine heavy metals or toxicity.
- Determine if healing is taking place in any organ.
- Determine high blood pressure or high blood sugar.
- Tell us what conditions we are most susceptible to, such as chronic sinus and lung mucous, blood and cholesterol issues, lowered immune function and more.
- Tell us if we inherited certain weakness from our ancestors that we can strengthen with nutrition and good lifestyle habits.
- Determine certain traits in our personality, and life lessons yet to be learned.

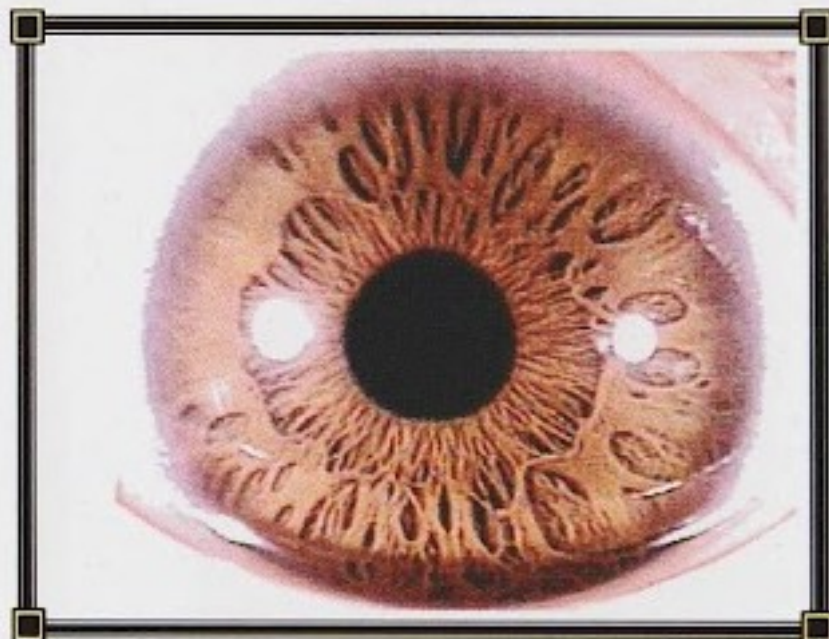
Iridology is Used For

Early Stage Diagnosis

- Diagnose cancer or any other disease although it can give you indications of inherited energy in the various tissues.
- Determine if one has parasites in any organ or system.
- Determine constipation.
- Determine heart disease.
- Determine diabetes.
- Determine high cholesterol.
- Tell us what you have as chronic sinus and lung problems, lowered immune function and more.
- Tell us if we inherited traits from our ancestors that we can strengthen with nutrition and lifestyle habits.
- Determine certain traits in our personality, and life lessons yet to be learned.

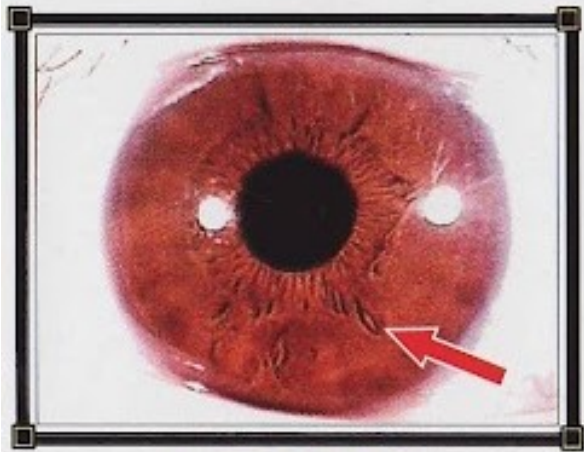


Normal Iris

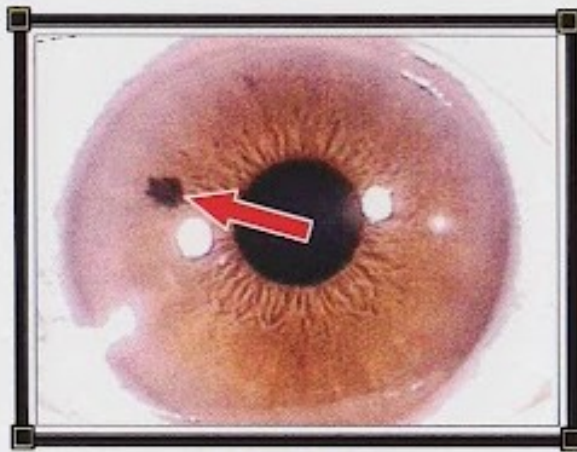


Abnormal Iris

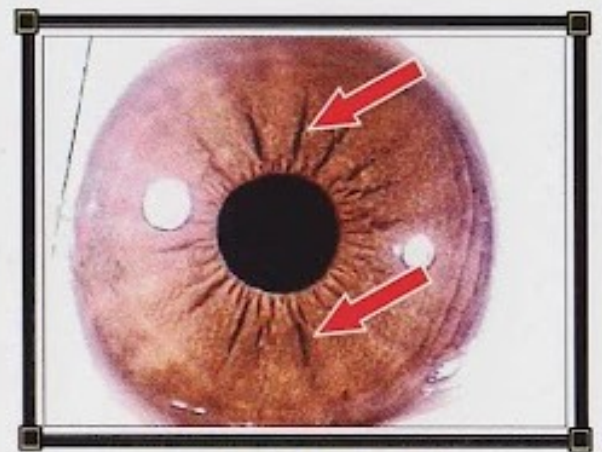
Six Diarhesis



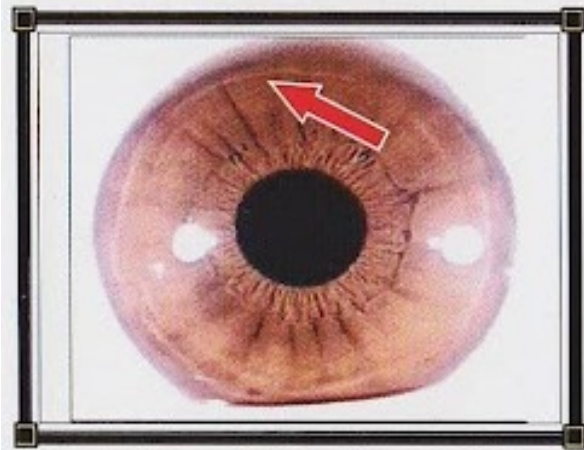
LACUNA



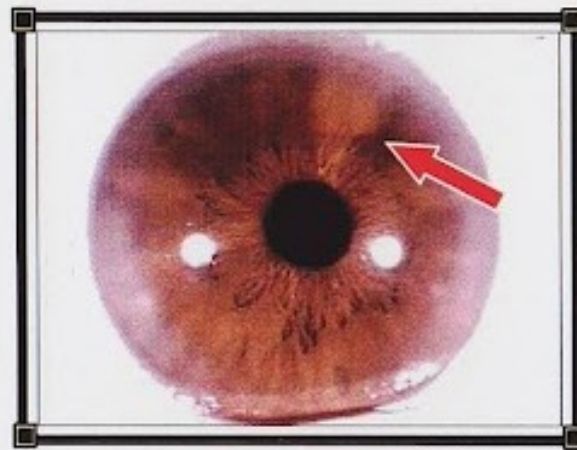
SPOT



FURROW



LINE

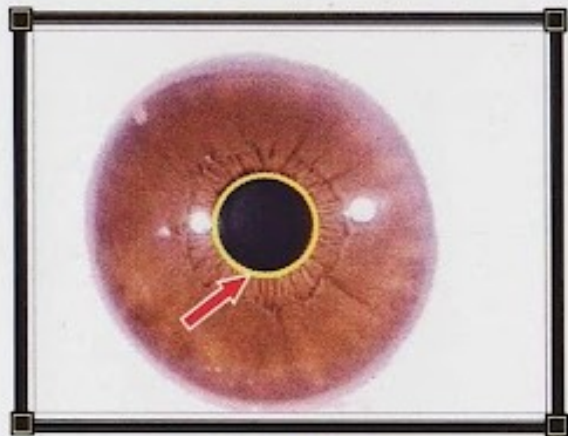


COLOR CHANGE

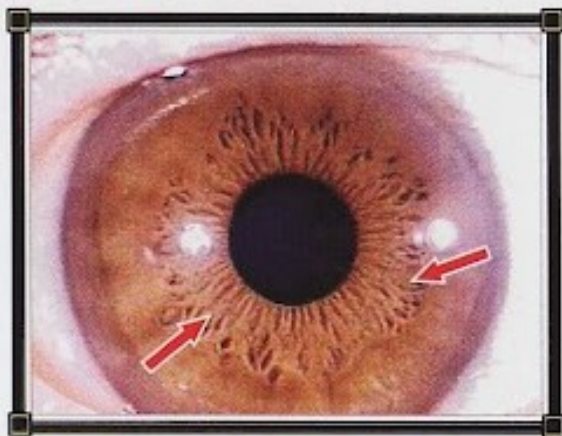


DENSITY

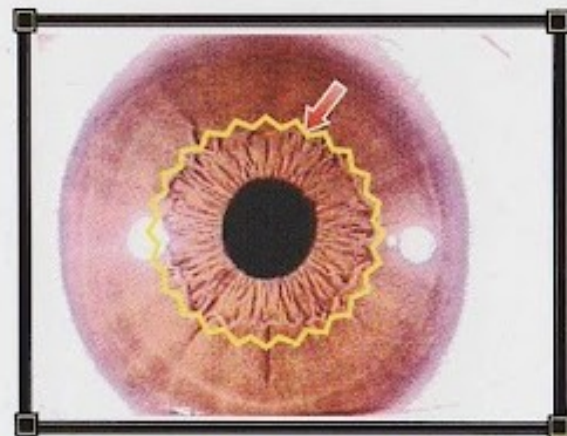
Twelve Iris Symptoms



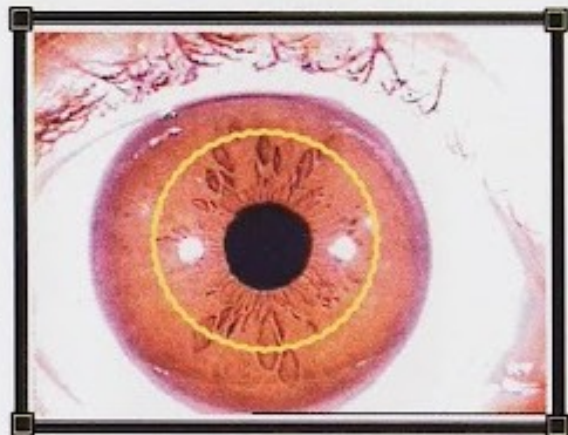
STOMACH



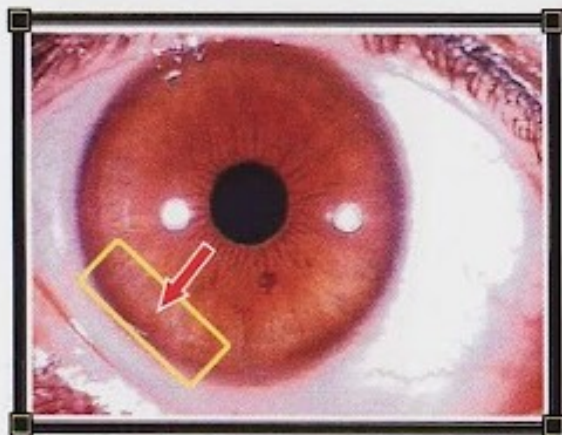
COLON AND INTESTINE



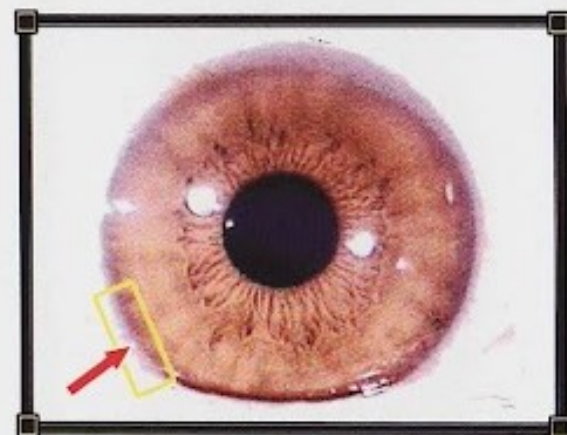
AUTONOMIC NERVE



INNER ORGANS



LLYMPH SYSTEM

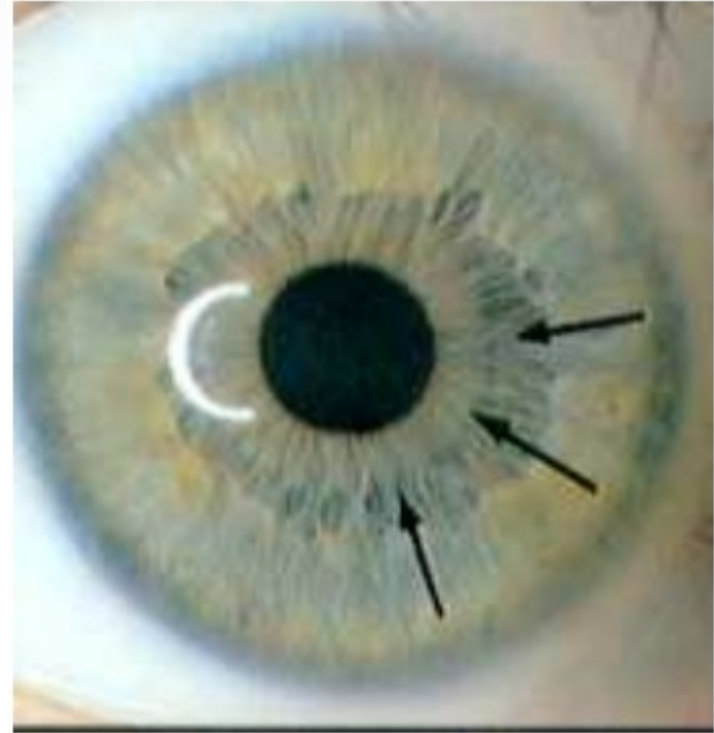


SKIN METABOLISM

Pathology of Health Problems



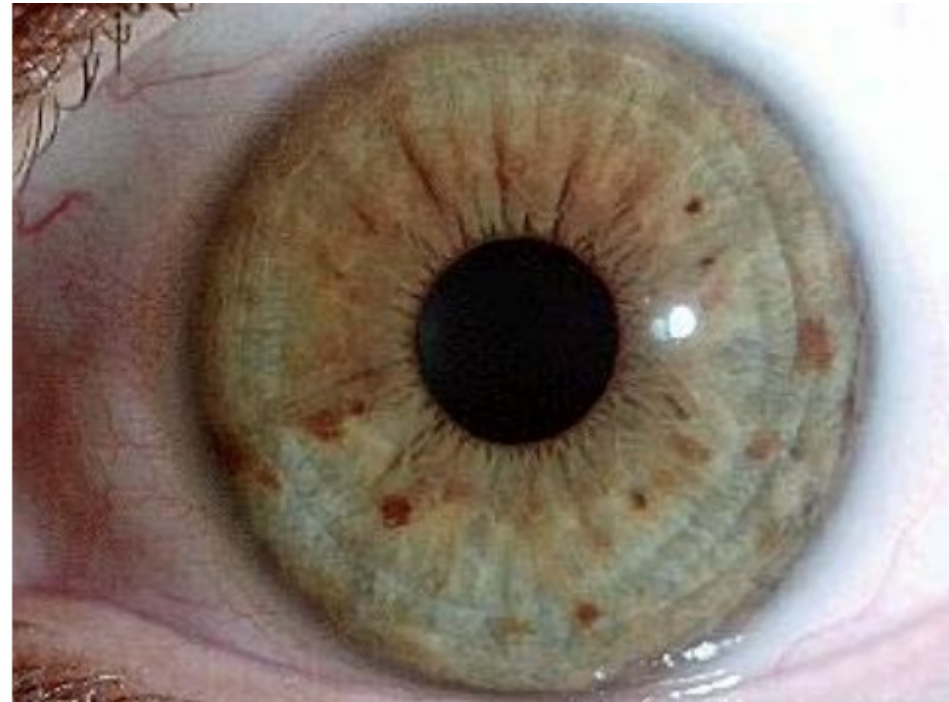
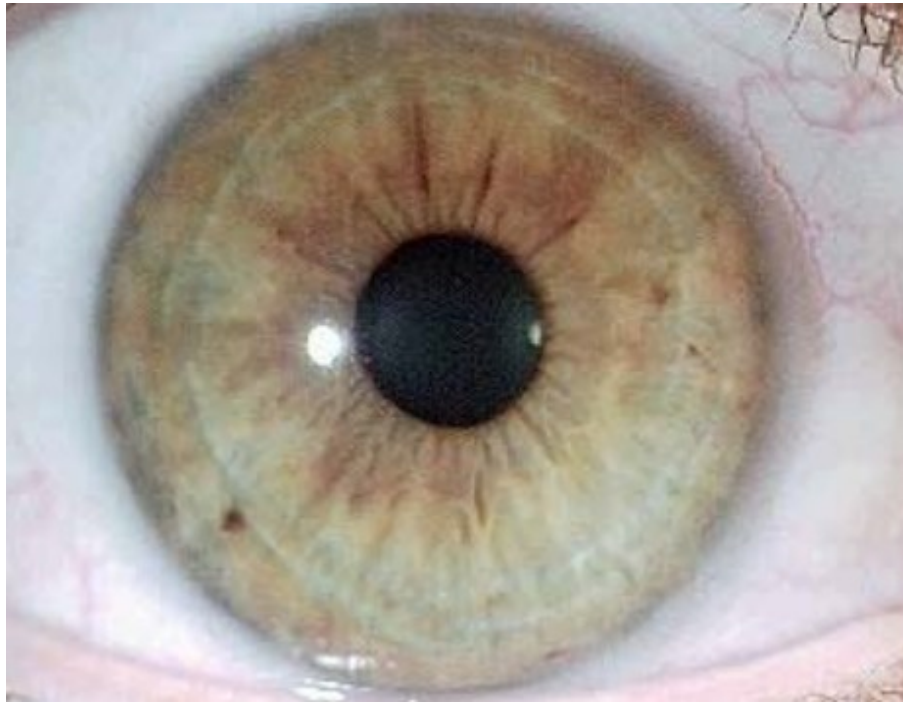
Overacid Stomach



Underacid Stomach

Blue Brow Mixed Eyes

Blue eye are a sign of toxicity in the body due to **digestive problems**. Special attention is required for **stomach, pancreas, gall bladder** and especially the **liver**.

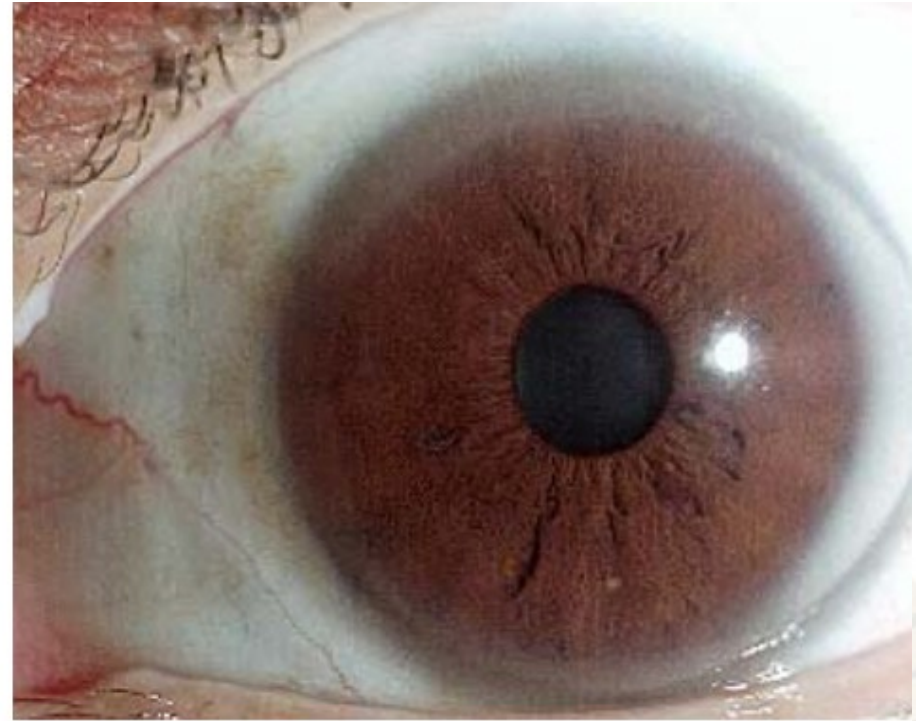
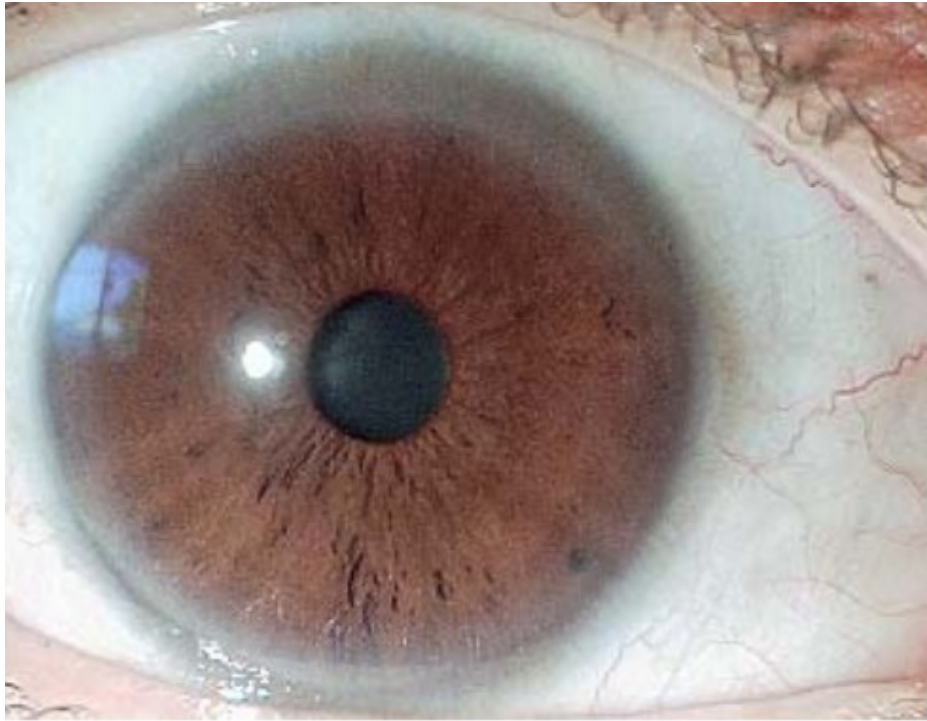


Brow Mixed Eyes

Pre-disposed to **imbalances in blood composition** and hence to **blood disorders**.

Have problems with calcium metabolism.

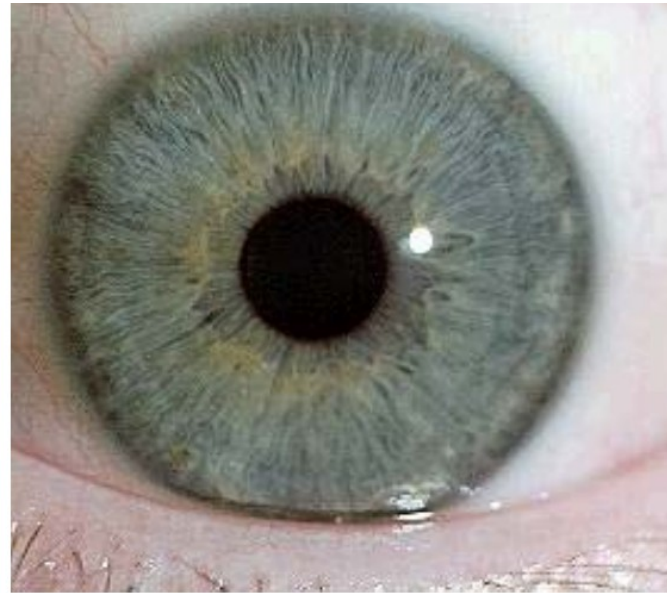
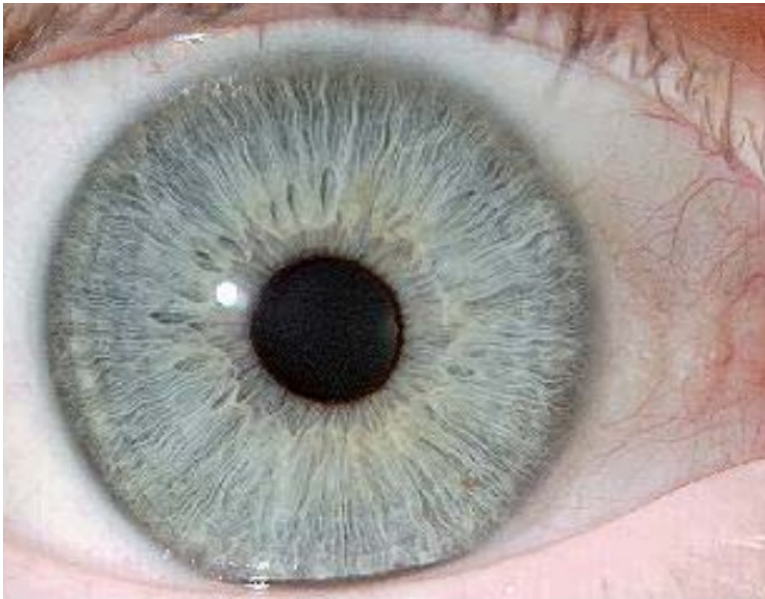
Specific systems and organs to pay particular attention to are: The **circulatory system** (heart, blood, blood vessels), the organs that make blood (**liver, spleen, bone marrow**), the **digestive** system and the **endocrine** glands.



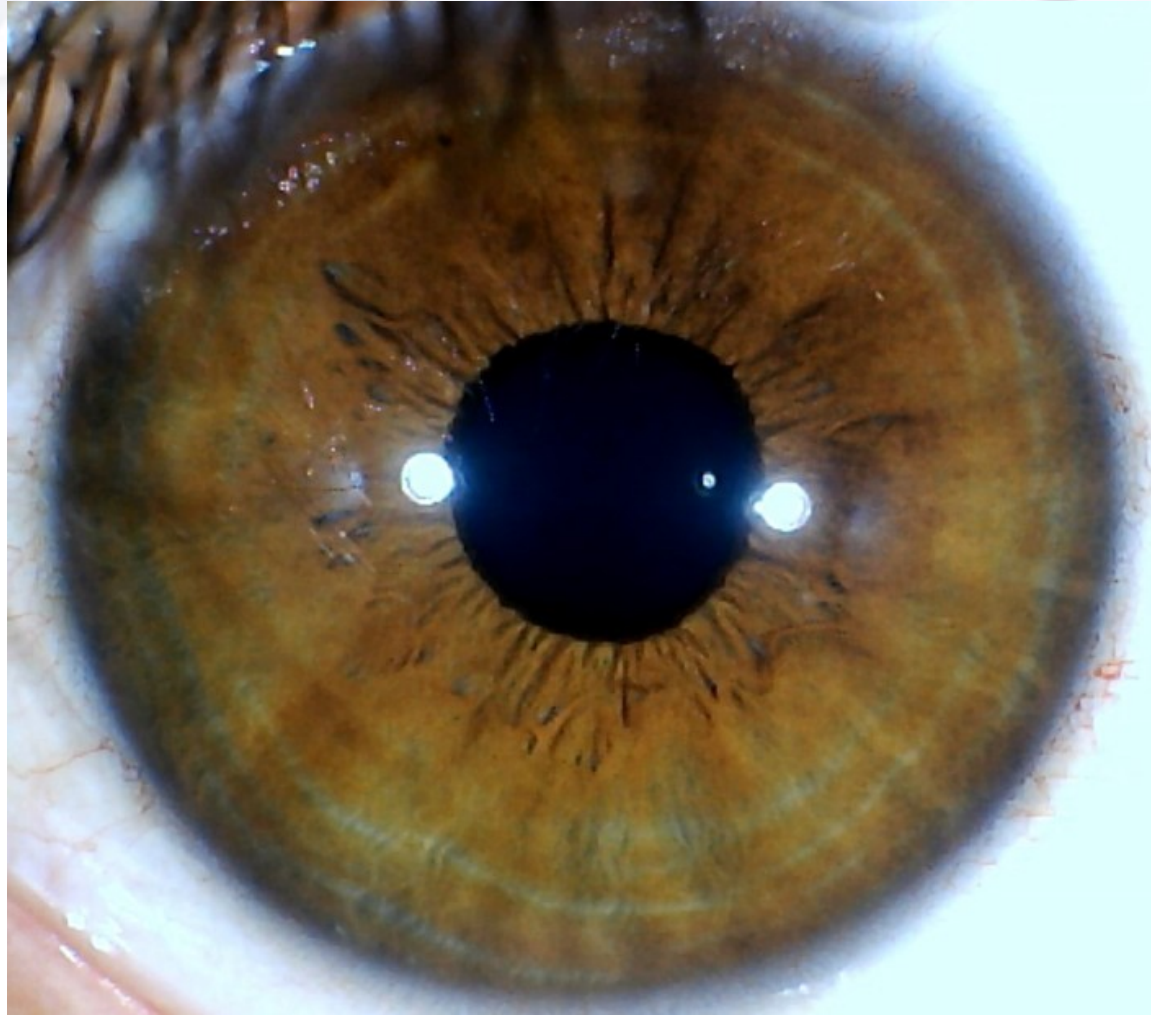
Pathology of Health Problems

Found in people's of European descent.

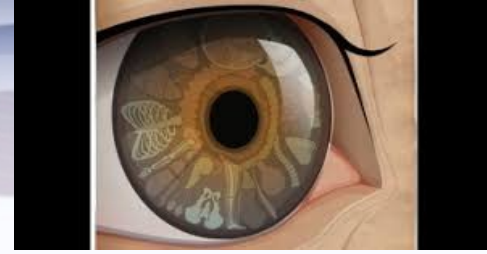
It usually accompanies a the person is **prone to lymphatic disturbances** and **catarrh affictions**.



Nerve Rings



History of Iridology



Iridology is depicted in the temples of ancient Egypt and referred to in ancient Chinese texts as well.

It is not a Western discovery. However, it was the modern Western world that took this magnificent craft and made it into a more accessible and more accurate science.

1800 Ignaz von Peczely re-discover the iridology in animals.

By making ver direct research, he brought the information together in charts.

Till 1985, it was taught at Harvard medical school. It was discarded only because school needed more rooms.

Four Stages

- The **First stage** was before 1800 when many people, including farmers, practiced iridology as a craft. Some charts were probably used at this time.
- The **Second stage** starts after the 1800's. Iridology continued to be practiced as a craft among farmers and monks. However, it became more of a science in the company of doctors and other people. It was usually practiced from this time with the use of charts and special equipment.
- The **Third stage** of iridology is the modern stage. In the past ten years iridology has made leaps in chart development due to high power magnifications and computers as well as the work of people like Bernard Jenson who personally saw thousands of patients and was able to cross-reference and record hundreds of thousands of pieces of data about iris traits.
- **Forth Stage** is the future where artificial intelligence and high performance computing is available to prove the iridology.

Iridology Mystery or Revolution

(Review Paper by Amna Haider)

- Collected data from NCBI-pub med, Cochrane library, IEEE digital library and Google scholar. (1990-2017)
- 33 Articles with highest citation were selected
- 21 Articles were in the favor of Iridology
- 12 are in disagreement

Conventional Disease Diagnosis Methods

Dr. Cabot of Harvard University, stated that post-mortem examinations of one thousand cases (conducted by himself) disclosed the fact that the ante-mortem diagnoses were correct in only fifty-three percent of these cases.

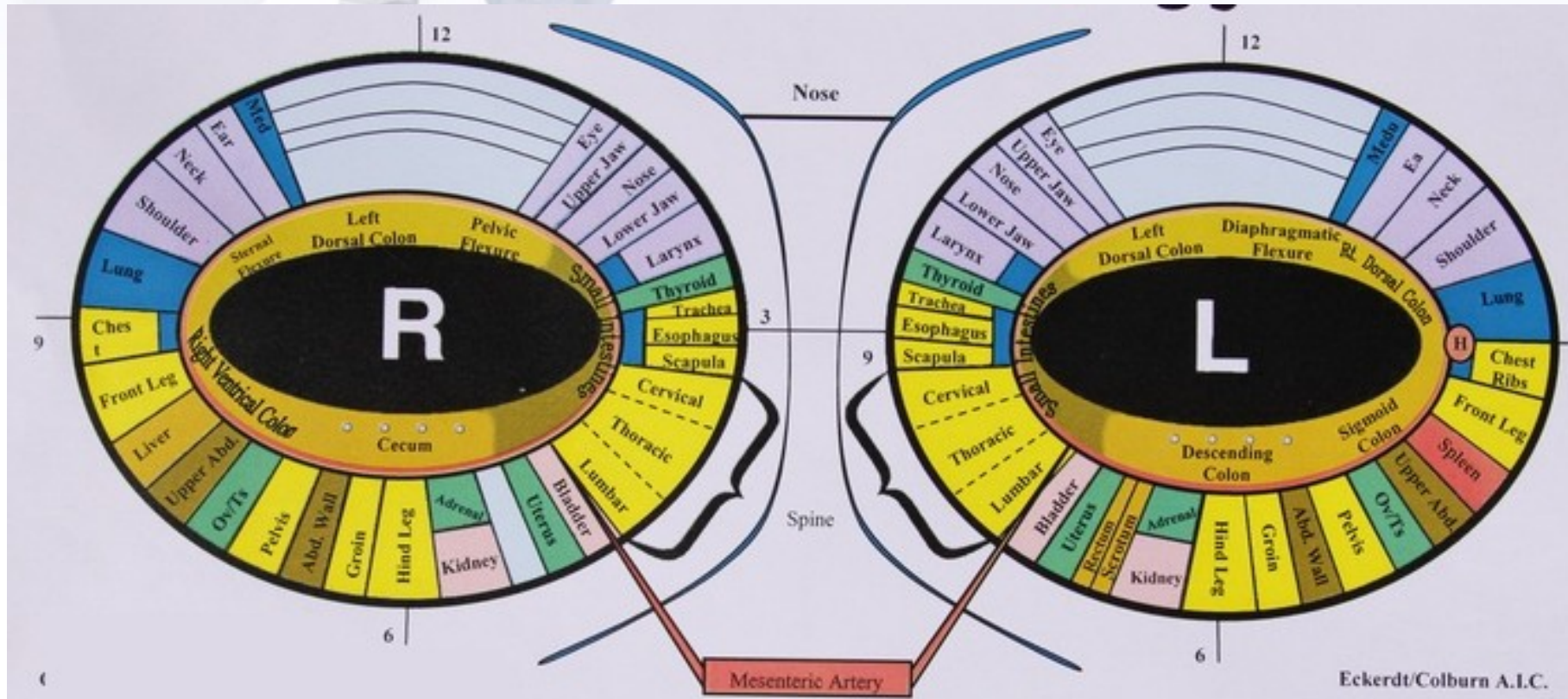
The following table compiled by Dr. Cabot gives the nature of the various diseases and the exact percentage of correct diagnoses in each:

Disease	Percent
Diabetes Mellitus	95
Typhoid	92
Aortic Regurg	84
Cancer of the Colon	74
Lobar Pneumonia	74
Chr. Glomeruloneph	74
Cerebral Tumor	72-4/5
Tb. Meningitis	72
Gastric Cancer	72
Mitral Stenosis	69
Brain Hemorrhage	67
Septic Meningitis	64
Aortic Stenosis	61
Phthisis, acute	59
Miliary Tb.	52
Chronic Interst. Neph.	50
Thoracic Aneurism	50
Hepatic Cirrhosis	39
Acute Endocard	39
Peptic Ulcer	36
Suppurative Neph.	35
Renal Tb;	33-1/3
Bronchopneumonia	33
Vertebral Tb.	23
Chron. Myocarditis	22
Hepatic Abscess	20
Ac. Pericarditis	20
Ac.Nephritis	16

Papers Published in Last Few Years

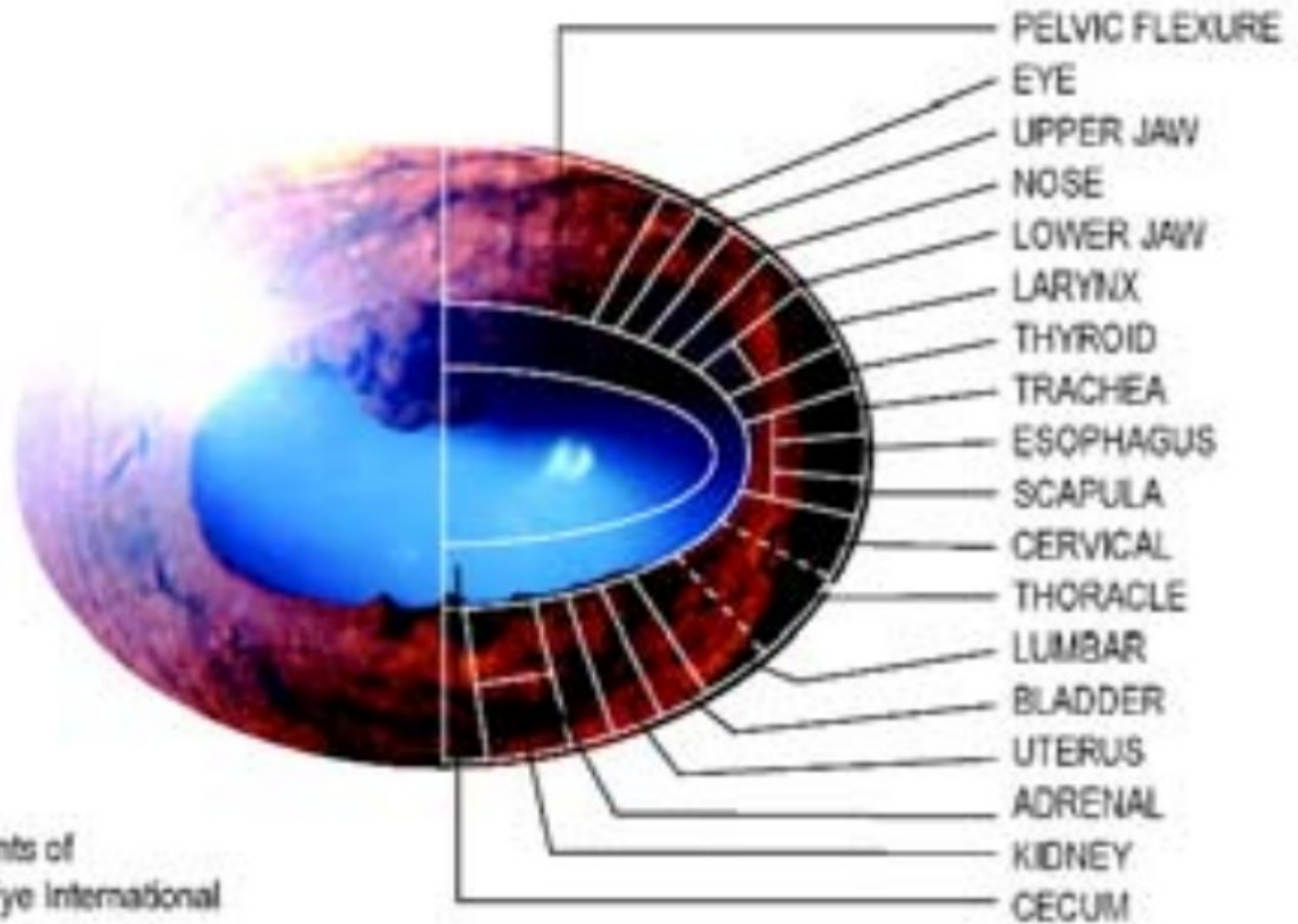
Dysfunctional Organs	Approximate Number of Publications in last few years	Citations
Heart	11 [6-16]	93
Liver	10 [17-26]	43
Kidney	15 [27-42]	137
Stomach	11 [43-53]	83
Lung	12 [54-65]	55
Books	11 [66-76]	

Animal Iridology



SYSTEMS	COLORS
Circulation:.....	(heart, mesenteric artery)
Glandular:.....	(adrenals, thyroids)
Structural:.....	(bones, muscle, joint, tendons)
Respiratory:.....	(lungs, bronchioles, medula)
Urinary:.....	(kidney, bladder)
Large Intestinal:...	(large intestine, liver, rectum, scrotum)
Small Intestinal:...	(small intestine, upper abd., abd. wall)
Head:.....	(ear, eye, neck, nose, shoulder, nose, upper/lower jaw)
Lymphatic:.....	(cecum, descending colon)
Stress lines:.....	(Brain area)

Equine Iridology

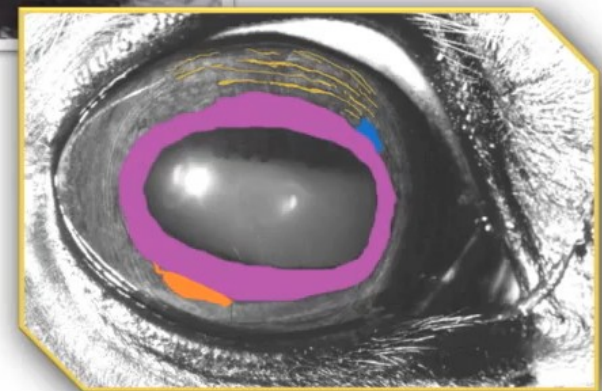


Grid compliments of
Through The Eye International



Horse Iris Images



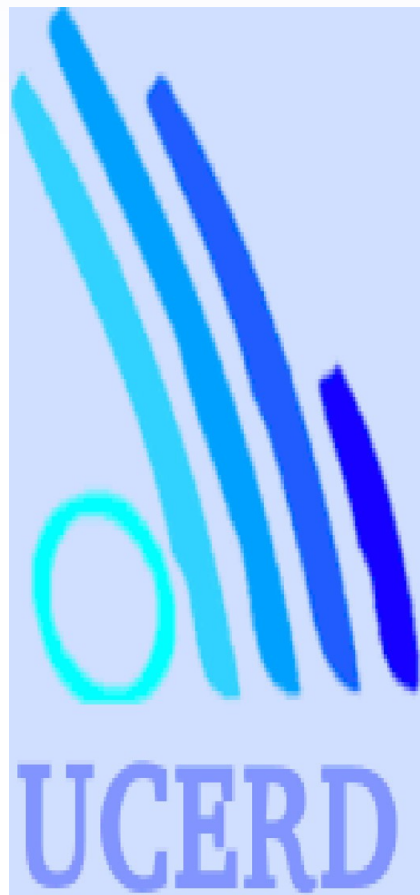


COLON

STRESS LINES

PELVIC FLEXURE

PELVIS



**Consultancy for:
FYPs and Future Career Guidance.
Engineering Workshops, Master
and Ph.D. thesis.**

**Design and Develop Industrial
Digital Systems.**

www.ucerd.com